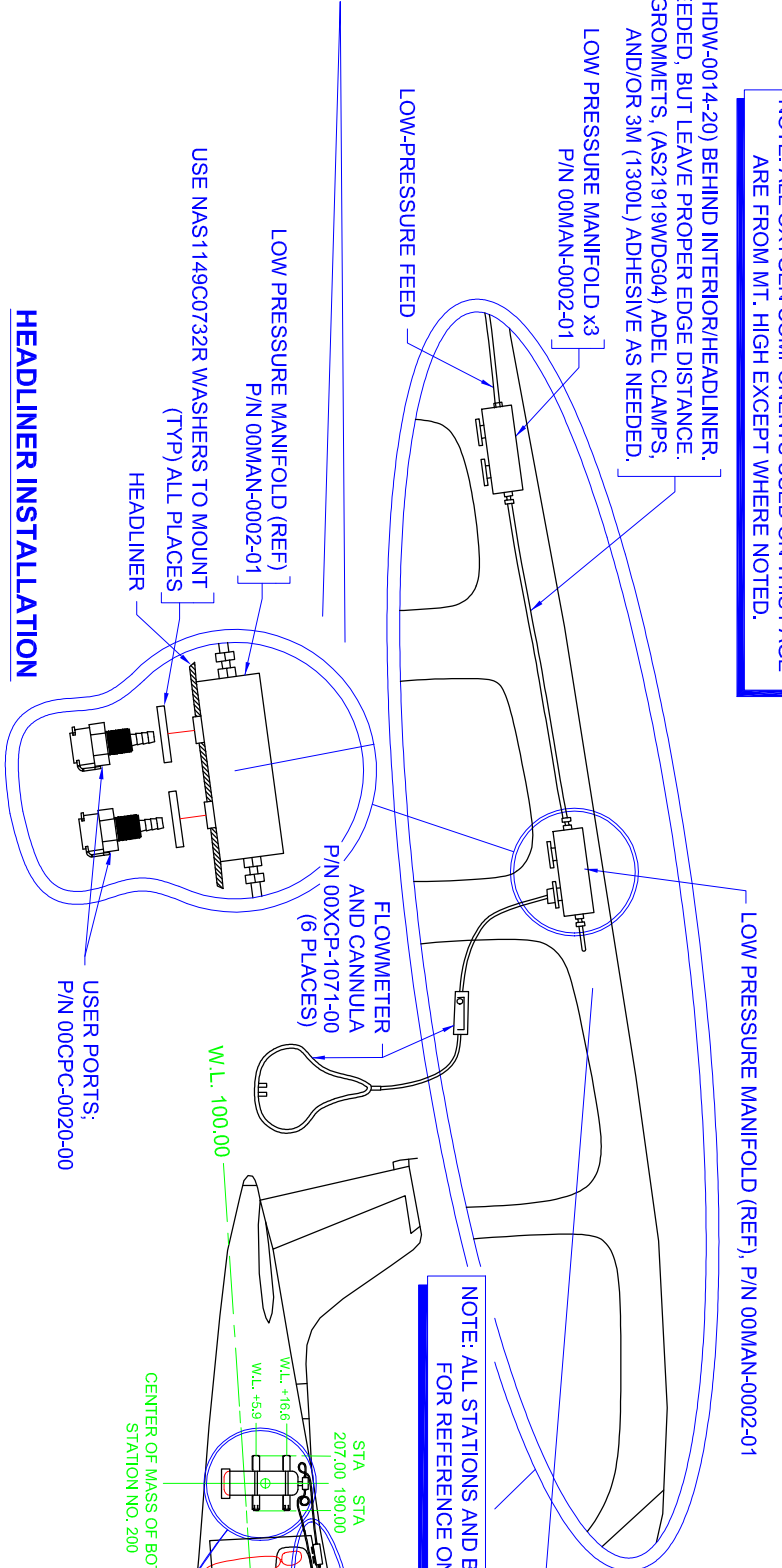
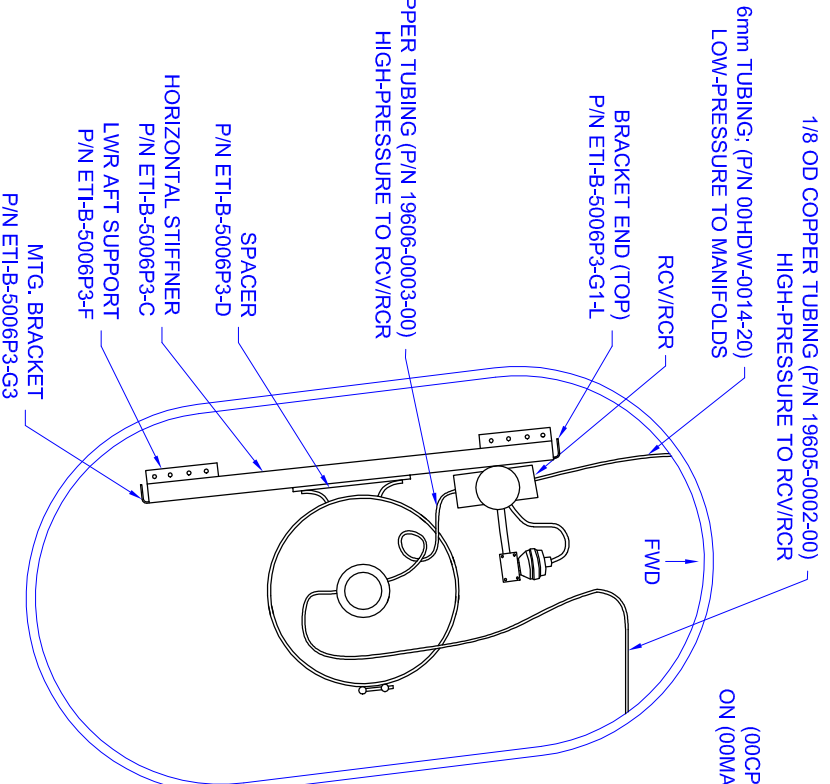


RUN TUBING (00HDM-0014-20) BEHIND INTERIOR/HEADLINER. DRILL HOLES AS NEEDED, BUT LEAVE PROPER EDGE DISTANCE. SECURE WITH (MS36489-6) GROMMETS, (AS21919WDG04) ADEL CLAMPS, AND/OR 3M (1300L) ADHESIVE AS NEEDED.

NOTE: ALL OXYGEN COMPONENTS USED ON THIS PAGE ARE FROM MT. HIGH EXCEPT WHERE NOTED.

NOTE: ALL USER PORT BLOCK ASSEMBLIES ARE INSTALLED DIRECTLY TO THE HEADLINER. THE BLOCK IS PLACED ON THE TOP OF THE HEADLINER AND SECURED BY THE FLAT WASHERS AND SCREWED IN USER PORTS FROM THE BOTTOM SIDE.

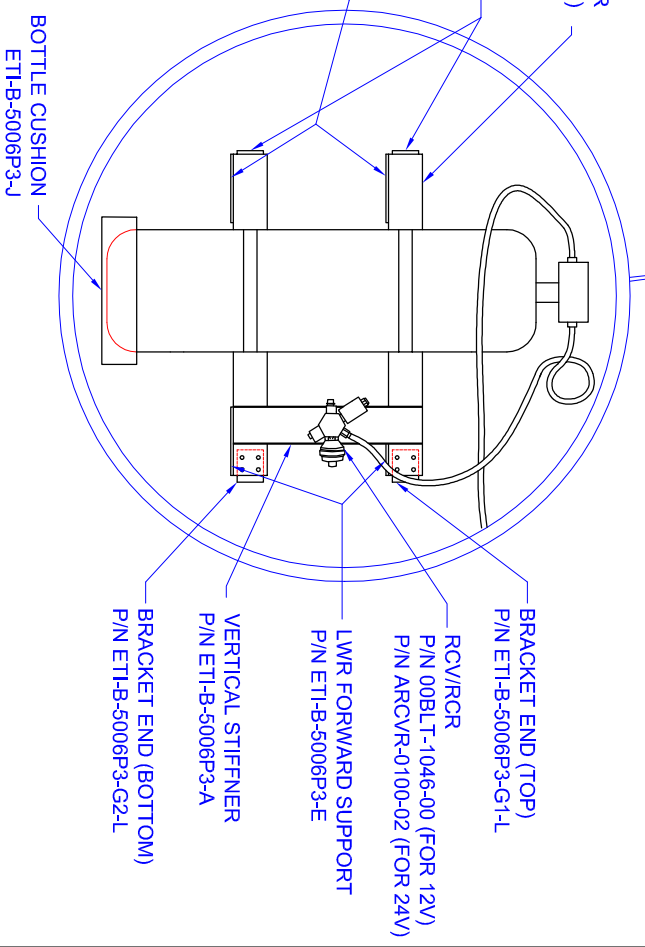
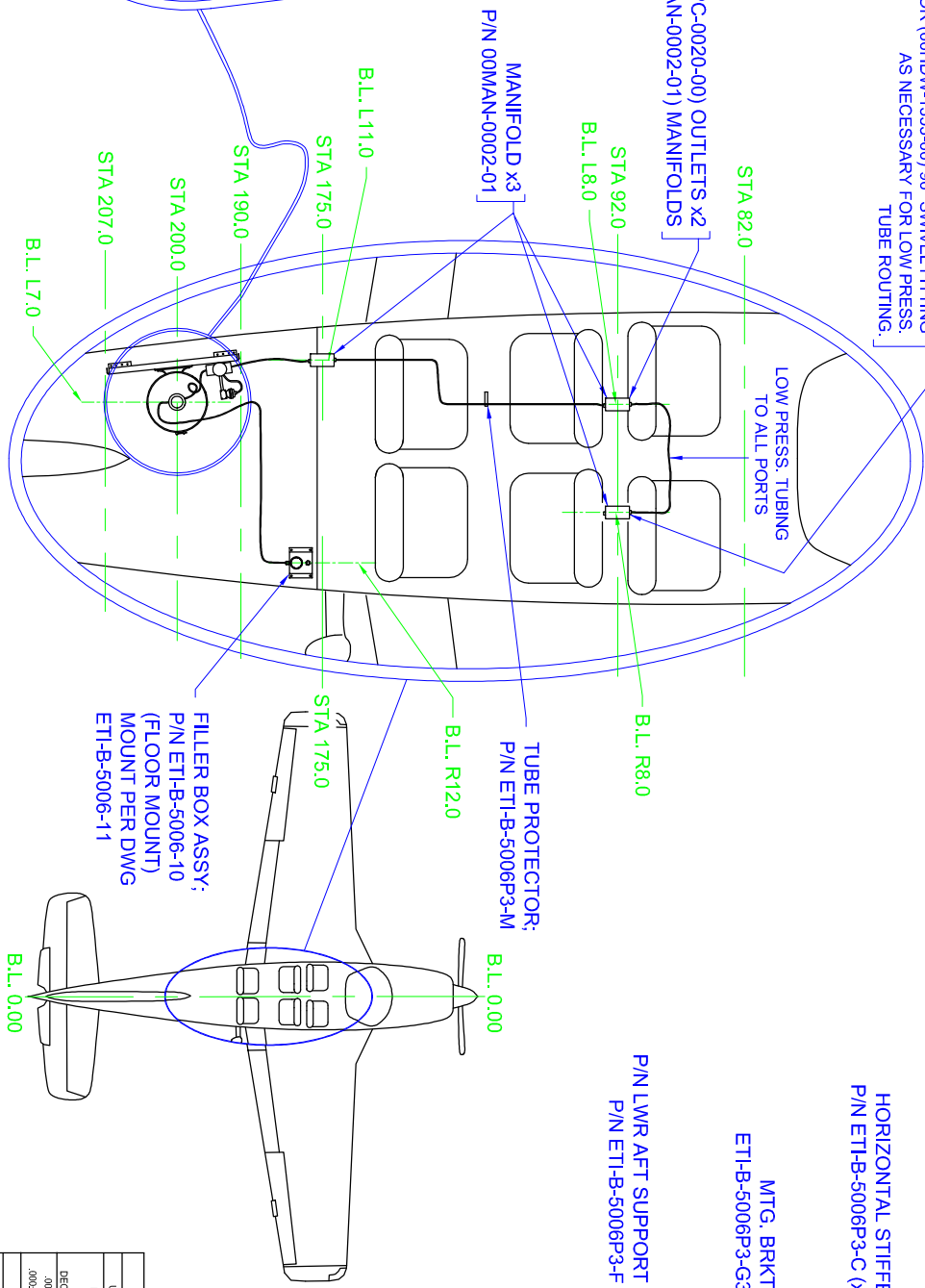
NOTES:
1. DRILL HOLES AS NEEDED.
2. TRIM BRACKETS/ETC AS NEEDED.
3. VIEWS NOT TO SCALE.



NOTE: USE PILOT DOOR SEAL AS A REFERENCE FOR LOCATION(S) OF FWD O2 MANIFOLDS. WHEN FRONT SEATS ARE MOVED ALL THE WAY TO THE REAR SLIDING POSITION, THE O2 PORTS MUST CLEAR THE PILOT/CO-PILOTS HEAD. KEEP THIS IN MIND WHEN PLACING THEM IN THE HEADLINER.

HEADLINER INSTALLATION

USE (00HDM-1350-00) STRAIGHT FITTING OR (00HDM-1353-00) 90° SWIVEL FITTING AS NECESSARY FOR LOW PRESS. TUBE ROUTING.



QTY.	PART NUMBER	MATERIAL	SPECIFICATION	DESCRIPTION
	UNLESS OTHERWISE SPECIFIED			
	DIMENSIONS ARE IN INCHES			
	TOLERANCES ARE			
	DECIMALS	ANGLES		
	.0002-010	MACH	F1	
		FRACTIONS: 1/16		
ENGINE TECHNOLOGIES INC.				
400 AIRPORT ROAD ADA, OKLAHOMA 74820				
DRAWING NO: ETI-B-5006-1-L				
DRAWN: CALEB CHRISTIAN				
CHECK: STRESS: APPROVED: TITLE: L/H OXYGEN SYSTEM				
SCALE: NTS				
SHEET 4 OF 5				